

# NiceLabel 2017

Products and services



# NiceLabel empowers businesses to achieve more

We exist to help business achieve continuous improvement and productivity gains from their labeling process. We call this “**print productivity.**”

Embodying the principle, Do more. Faster. With less. NiceLabel’s technology and professional services solve real business problems and create substantial value.

NiceLabel is a global provider of label and marking productivity software solutions that help business mitigate risk, increase agility and optimize the performance and efficiency of their printing and marking processes.

NiceLabel solutions are built on best-in-class technology that supports business-critical operations, enabling robust best practice processes to be implemented quickly and flexibly.

By simplifying labeling and marking for customers, improving productivity, maximizing uptime and serving a long lifetime, NiceLabel solutions provide significant ROI and deliver sustainable advantage.



# Product range



## DESIGN & PRINT

Start producing professional labels without IT help.



## DESIGN & CONTROLLED PRINT

Streamline label printing to control labor costs and eliminate errors.



## MANAGED DESIGN & CONTROLLED PRINT

Standardize your entire labeling process to meet compliance requirements.

### DESIGNER EXPRESS DESIGNER PRO



Label design



On-demand printing

### POWERFORMS POWERFORMS SUITE



Label design



On-demand printing



Application builder



Integrated printing

### LMS PRO LMS ENTERPRISE



Label design



On-demand printing



Application builder



Integrated printing



Document management



Quality management



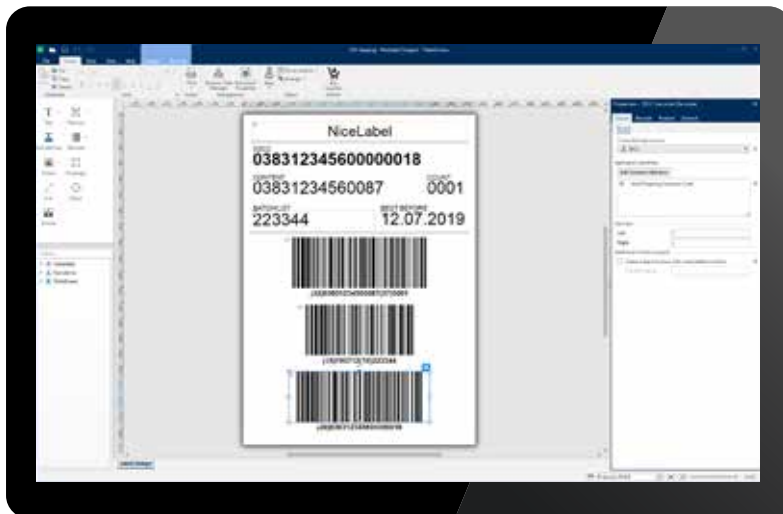
## DESIGN & PRINT

NiceLabel Design and Print software helps you quickly design labels and create an efficient printing process so you can focus on running your business instead of worrying about print errors every day. Quickly design professional labels without making investments in training and coding.

## Design

---

The NiceLabel Designer delivers a familiar Microsoft Word-like user experience. This means anyone can quickly design professional labels without barcoding, design or advanced computer skills. Use one of the pre-designed label templates or create one from scratch in minutes without previous label design experience.



### **Design like a pro, even if you're a novice**

Guidelines, positioning, anchoring, alignment, grouping and other features help you quickly design professional labels.

### **Pre-built compliance labels**

NiceLabel comes with a library of pre-built labels that align with industry standards like GS1, AIAG, ODETTE, GM, VDA, etc.

### **All the help you need**

NiceLabel provides shortcuts, on-screen hints, error warnings, and explanations to ensure you get all the help you need to quickly create accurate labels.

### **Rich and responsive text objects**

NiceLabel automatically wraps your text or adjusts font size to ensure your dynamic data fits into the designated area.

### **All the languages you need**

Every part of NiceLabel supports foreign languages including its user interface, help system and user guides. Label content can

be printed in any language with multiple languages appearing on the same label.

### **Powerful, unique features**

Intelligent features like relative object positioning, variable label length and double-sided printing help reduce the number of template variations you need to create.

### **Database connectivity**

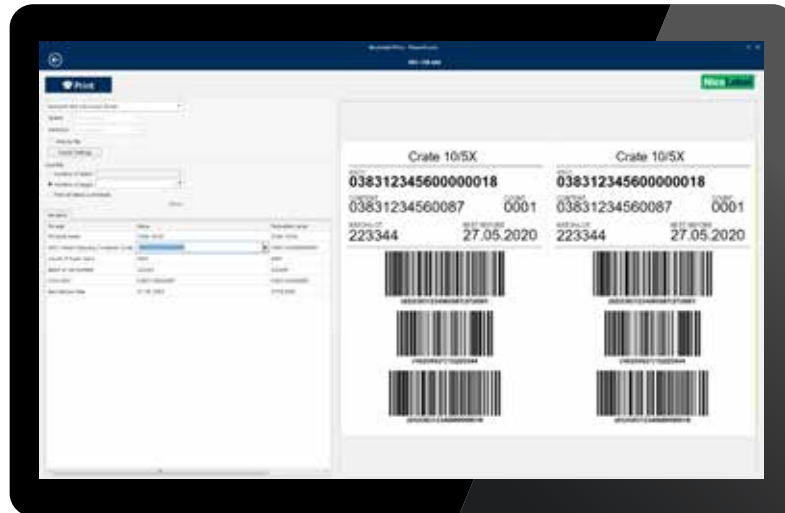
Anyone can connect to an Excel spreadsheet or an Access database using the NiceLabel wizard. Advanced users can connect labels with server databases.

### **Data validation, formatting and processing**

You often need to print data in a particular format; sometimes joined into a single text or barcode object (i.e. for serialization). This also may be required to comply with industry or customer requirements. NiceLabel helps you meet these needs by providing functions configured via wizards instead of requiring coding.

# Print

Printing the right label template with the right data is business-critical for a company of any size. NiceLabel ensures print operators experience a simple interface providing them with everything they need and no distractions. The result is a quick and accurate printing process.



## Print with fewer errors

Labels are not designed every day but they are printed every day. It is critical to ensure the printing process is streamlined and accurate. The print operators must be able to quickly select the correct data, adjust printer settings and preview the label print job. Operators should not be able to change the label template. Label printing requires a special interface that ensures data accuracy, prevents accidental label template changes and minimizes the learning curve for production and warehouse print operators.

## NiceLabel Print for print productivity

NiceLabel Print is the module created for the print operator. It allows the users to select the right label template, but prevents them from modifying it. The "all-in-one" printing form includes all data entry fields, database navigation and selection, printer settings and a print preview of the entire print job so the operators print efficiently and without errors.

# Products

## DESIGNER EXPRESS

1 user and unlimited printers

No multi-user editions

Label Designer

Basic database: MS Excel and text files

Basic counter

Basic variables

No functions

On-demand printing

Pre-defined printing forms

Modules  Designer  
 Print

## DESIGNER PRO

1 user and unlimited printers

Multi-user with 3, 5 or 10 printers editions

Label Designer

All databases

All counters & serialization

All variables

All functions (including concatenation)

On-demand printing

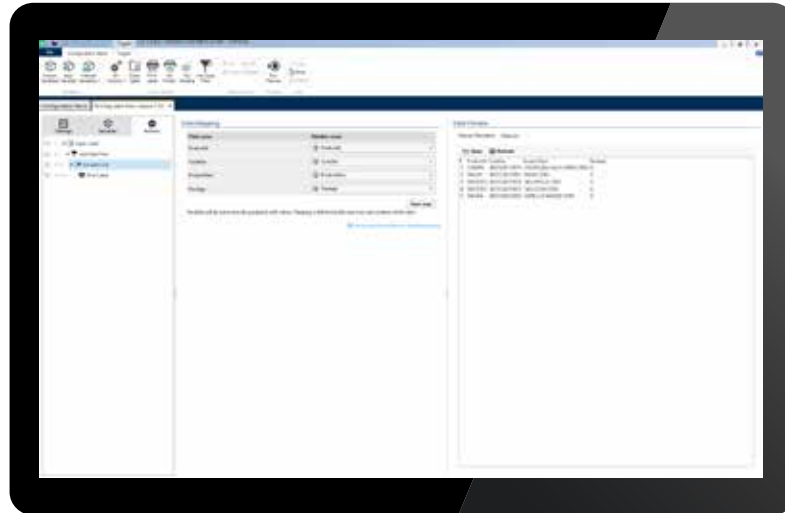
Adaptable printing forms

Modules  Designer  
 Print



# Printing automation

Businesses can significantly reduce printing effort and achieve new levels of accuracy and productivity by using the Automation module's unmatched integration capabilities. Automation's features empower business users to integrate and automate printing from existing business systems without any coding. Automation also lets you integrate printing with hardware devices such as PLCs or weight scales.



## Integration without coding

NiceLabel Automation accepts and transforms data in any format so you don't have to customize your existing business systems or applications.

## Works with all printers

NiceLabel Automation uses universal and dynamic label templates that work across thousands of printer models, which substantially reduces number of label variations and simplifies label management.

## Data mapping

The built-in data mapping wizard helps you easily extract and map data from common formats like CSV or fixed-width text files. The mapping tool also supports legacy system modernization by supporting data in unstructured formats such as legacy reports or printer commands. Even binary data can be extracted and mapped!

## Unmatched performance and reliability

Automation includes NiceLabel's next-generation "64-bit print engine" that takes advantage of new technologies to maximize print productivity while using minimum computer resources.

## Products

### POWERFORMS

1 user and unlimited printers

Label designer

On-demand printing

Application builder

Modules  Designer  
 Print

### POWERFORMS SUITE





Multi-user with 3, 5, 10 or 20 printers

Label designer

On-demand printing

Application builder

Integrated printing

Modules  Designer  
 Print  
 Automation Builder (Easy)  
 Automation Manager (Easy)



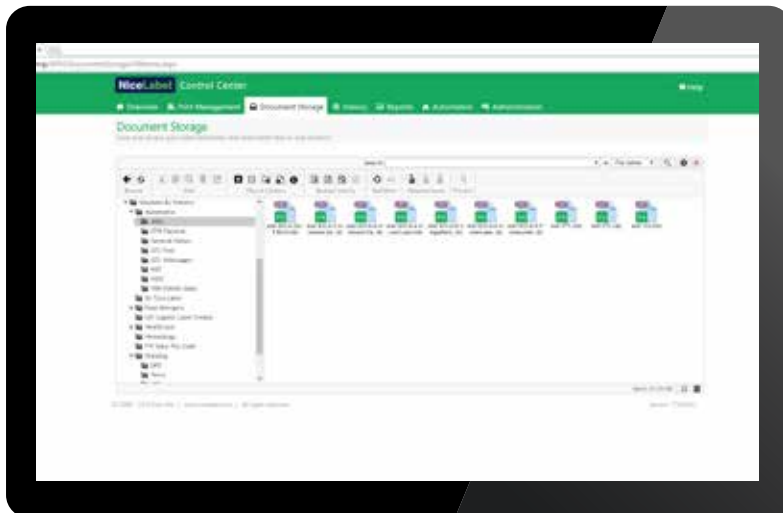
## MANAGED DESIGN & CONTROLLED PRINT

The NiceLabel LMS is a next-generation all-inclusive label management system for businesses that operate a quality management system or are regulated. The NiceLabel LMS includes everything you need to standardize, centralize and control your labeling.

## Designed for business users

---

NiceLabel's next-generation label design software enables business users to design and maintain customer specific and regulatory compliant label templates. Every NiceLabel template is optimized for over 4,200 printer models, reducing the number of label variations. Rapidly respond to label change requests while reducing the use of valuable IT resources.



## Document Management System: Control Center

---

Control Center is a Document Management System (DMS), built for the needs of labeling. It is a HTML5 web application that stores all documents in a centralized indexed database repository.

The web application provides a browser-based user interface that enables business-wide access and faster design and approval workflows without the need to install or maintain any software on local workstations. DMS includes the following features:

- Secure centralized storage
- Automatic version control
- Unique indexing and search
- Secure, electronic approval workflows
- Label comparison provides quality assurance

### **Security and Quality Management**

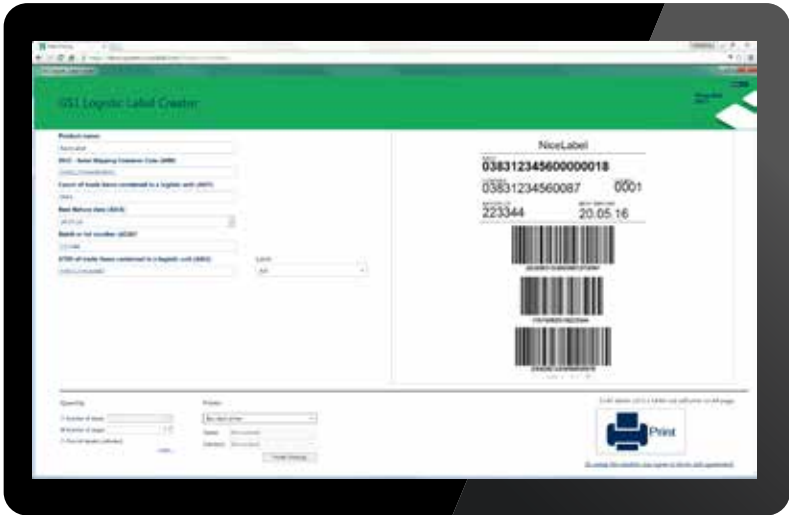
To comply with your company's quality management and security requirements, you need to control access to the labeling system just as you do to the financial data. Features that ensure security and quality:

- Secure role-based access control
- Device management and alerts help avoid unplanned downtime
- History & reports provide full traceability



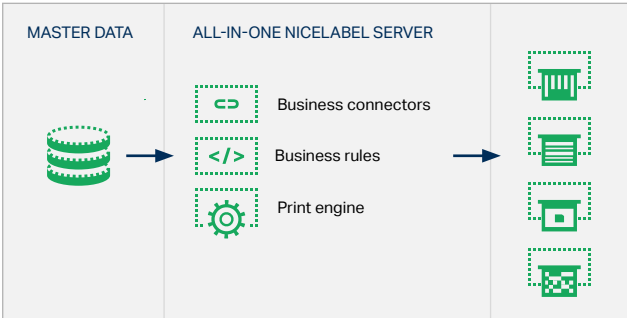
# Web Printing System: PowerForms Web

PowerForms Web is a web application that allows all manual printing applications to be centrally deployed and scaled business wide with a single click. The PowerForms Web module helps you centrally deploy on-demand labeling applications across all of your workstations, all of your remote locations and beyond to your suppliers, contract manufacturers or 3rd party logistics providers (3PL). Next-generation web technology allows you to deploy consistent labeling solutions from five users to many thousands of users in seconds.



# Integrated Printing System: Automation

Businesses can significantly reduce printing effort and achieve new levels of accuracy and productivity by using the Automation module's unmatched integration capabilities. Automation's features let you integrate and automate printing from existing business systems without any coding. Automation empowers you to streamline complex printing processes, eliminating errors and improving print productivity. The all-in-one server architecture includes business connectors, data mapping, business rules and workflows, a print engine and load balancing for high volume environments.



### All-in-one print server

- Pre-built connectors provide seamless integration
- Data mapping provides integration without coding
- Configurable business rules and workflows
- 64-bit architecture provides unmatched performance and reliability
- Scalability you can't outgrow

# Products

**LMS PRO**

---

Multi-user with 5, 10, 20 or 50 printers

---

Label designer & application builder

---

Document management system

---







Web printing system

---

Integrated printing system

---

Modules

-  Designer
-  Print
-  Automation Builder (Pro)
-  Automation Manager (Pro)
-  Control Center (Pro)
-  Web Printing

**LMS ENTERPRISE**

---

Multi-user with 5, 10, 20 or 50 printers

---

Label designer & application builder

---

Document Managements System with:

- Version control
- Approval workflows
- Quality assurance tools

---

Web printing system

---

Role Based Access Control

---

Integrated printing system with:

- SAP ABAP package
- Failover & load balancing
- Web services
- PDF and previews
- Advanced workflows and error handling







---

Non-production environment with

- Change and transport system

---

Modules

-  Designer
-  Print
-  Automation Builder (Enterprise)
-  Automation Manager (Enterprise)
-  Control Center (Enterprise)
-  Web Printing

## Professional services

---

We work closely with our customers to accelerate time to value and ensure they realize the maximum return from their NiceLabel investment. We take the time to understand the unique needs of each client and apply best practices to help them gain a competitive advantage.

### Our agility fosters your supply chain agility

A vibrant supply chain that responds with agility to the changing market environment is essential to achieving a competitive advantage for your company. Our professional services team's mission is to develop a responsive centralized labeling system that will step-up your supply chain agility. We use agile project management methodology to integrate the NiceLabel Platform into your processes faster to start reducing your costs sooner. We also setup the solution in a way that enables you to rapidly respond to changing regulatory and customer requirements.

### The only global professional services team for labeling

The NiceLabel Professional Services Group includes teams in the USA, Europe and China that will consult, implement and support your global deployments. Each region includes teams of business analysts, industry experts, a project manager and a strong technical support team. The teams work closely with customers and with each other to deliver maximum value in the shortest time.



# Software Maintenance Agreement

Avoid unplanned downtime and assure you have access to NiceLabel experts. The NiceLabel Software Maintenance Agreement (SMA) assures you have access to NiceLabel experts to quickly resolve any issues with your labelling system.

Benefits:

- Direct access to NiceLabel's expert technical support
- Assurance of minimal unplanned downtime
- Assurance of access to the NiceLabel development team (if needed)
- Software updates

## **Direct access to the experts and the developers**

The NiceLabel technical support teams work closely with the NiceLabel developers to ensure you receive the fastest and best possible support avoiding any unplanned downtime.

## **Regular software updates**

We regularly enhance NiceLabel to incorporate new features and fixes. You receive notifications about and access to the latest software updates.

## **Priority case handling**

All SMA customers have unlimited high priority telephone support and all email requests are responded to within one business day.

Your partner

Americas  
+1 262 784 2456  
sales.americas@nicelabel.com

EMEA  
+386 4280 5000  
sales@nicelabel.com

Germany  
+49 6104 68 99 80  
sales@nicelabel.de

China  
+86 21 6249 0371  
sales@nicelabel.cn